

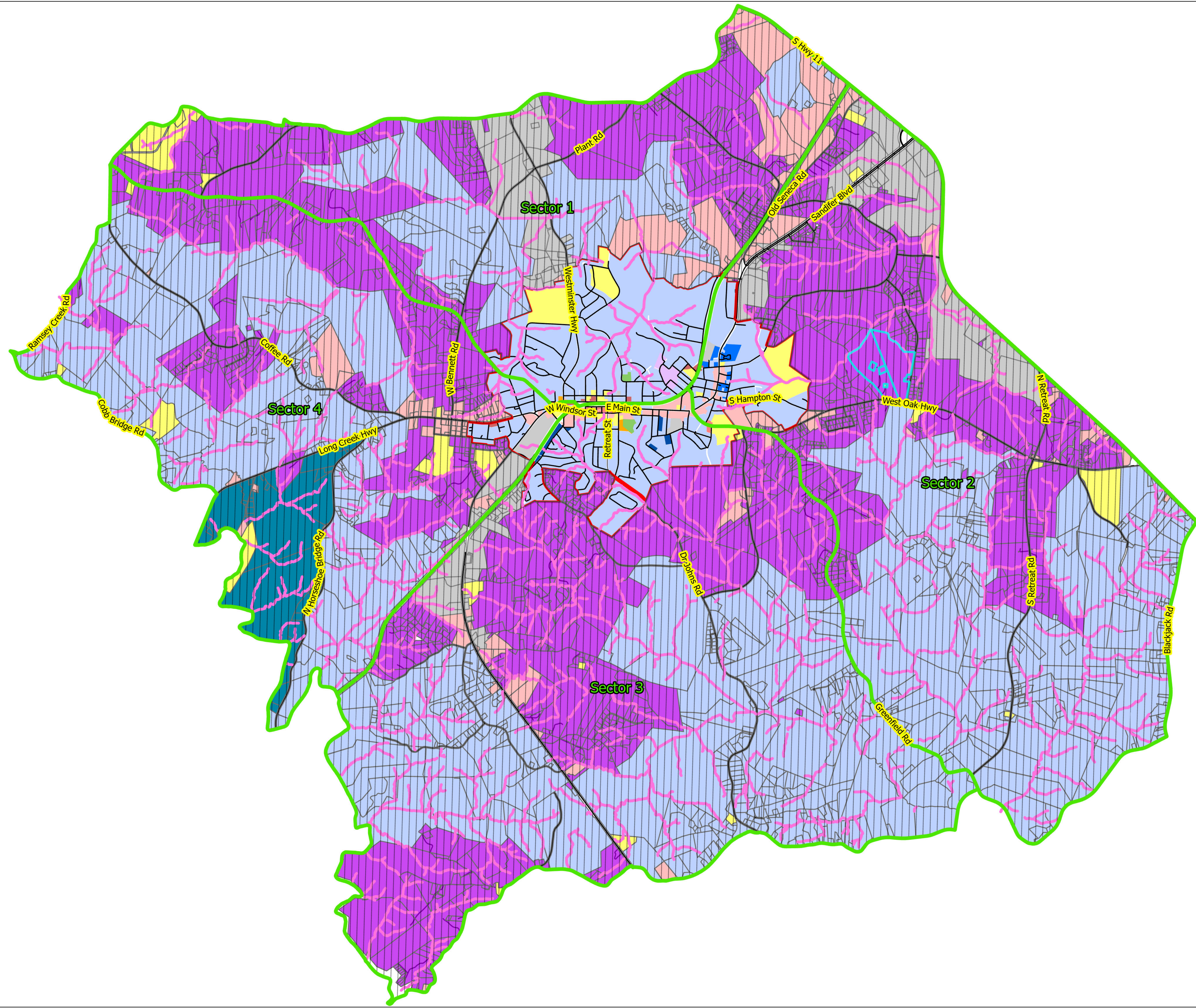
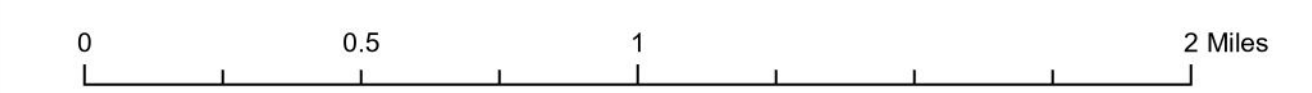
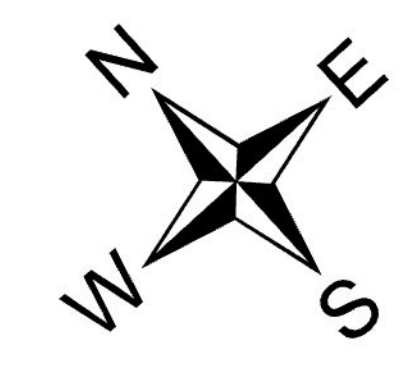


# City of Westminster Future Land Use and Planning Sectors

### Future Land Use

- GENERAL COMMERCIAL
- NEIGHBORHOOD COMMERCIAL
- CORE COMMERCIAL
- LOW DENSITY RESIDENTIAL
- GENERAL RESIDENTIAL
- MULTI-FAMILY HOUSING
- INSTITUTIONAL
- LIGHT INDUSTRIAL
- MIXED USE
- OFFICE
- RECREATION
- OUTSIDE OF WESTMINSTER CITY LIMITS
- LOW DENSITY RESIDENTIAL / PROTECTED
- MEDIUM DENSITY

- FUTURE LAND USE
- PLANNING SECTOR
- LAKES and WETLANDS
- STREAMS



This map is property of Oconee County Government.

This map (or data product) was created by Oconee County South Carolina Geographic Information Systems Office (OCSCGIS) and is solely intended to be used as a graphical representation. This map (or data product) is not intended to depict legal boundaries or to identify the lawful owner or current legal status of the subject property. The maps and data distributed by OCSCGIS are derived from a variety of public and private sector sources considered to be dependable, but the accuracy, completeness, and currency thereof are not guaranteed. OCSCGIS makes no warranties, expressed or implied, as to the accuracy, completeness, currency, reliability, or suitability for any particular purpose of the information or data contained in or generated from OCSCGIS. The user acknowledges and accepts all inherent limitations of the maps and data, including the fact that the maps and data are in a constant state of maintenance, correction, and revision. The maps and associated data do not represent a survey and are not survey grade.